



**Threshers Drive, Weavering, Maidstone, Kent, ME14 5UA**  
**Offers In Excess Of £400,000**





This beautifully presented three-bedroom semi-detached house boasts a stunning south-facing rear garden that offers a high degree of privacy.

You arrive at the property via a driveway that runs alongside a well-maintained lawn and hedge-lined front garden. Upon entering, you are greeted by a spacious entrance hall that leads into a generous dual-aspect sitting/dining room. This inviting space connects seamlessly to the kitchen, which overlooks the rear garden. Completing the ground floor is a convenient W.C. and two handy storage cupboards. Upstairs, the accommodation features a generous principal bedroom with an en-suite shower room, along with two additional double bedrooms and a family bathroom.

Externally, the driveway can comfortably accommodate two vehicles and provides access to the attached garage for extra parking or ample storage space. The south-facing rear garden features a large patio area for seating, established borders around the lawn, and stunning palm trees, as well as a versatile garden room that could serve as an office or gym. Tenure: Freehold. EPC Rating: C. Council Tax Band: D.



## LOCATION

Located in the highly sought-after area of Weaving, this property is close to Mote Park, which offers 440 acres of beautiful parkland, and just a short distance from the charming village centre of Bearsted. Here, you'll find an attractive green, a variety of shops, pubs, restaurants, a parish church, and a mainline train station providing services to London, Ashford International, and the coast. The area is also well-equipped with excellent infant and primary schools, including St. Johns, Thurnham, and Roseacre, and falls within the catchment area for reputable grammar schools and SST secondary school.

## ACCOMMODATION

Entrance Hallway

Cloakroom

Living Room

Dining Room

Kitchen

Landing

Principal Bedroom

Bedroom Two

Bedroom Three

Family Bathroom

## EXTERIOR

Driveway

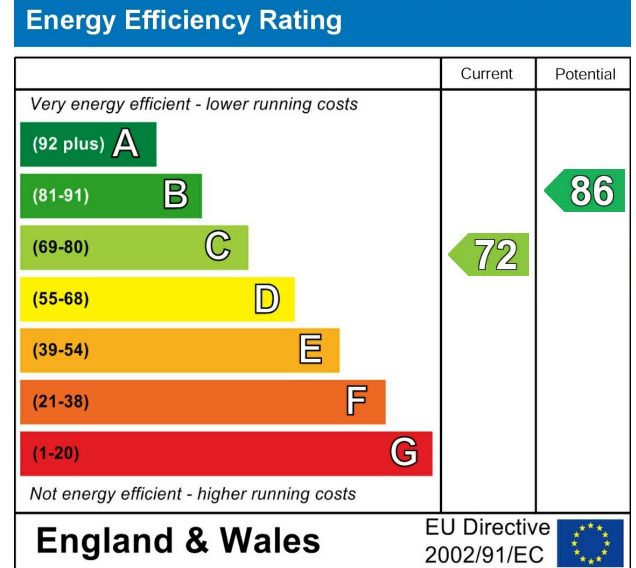
Garage

Summerhouse

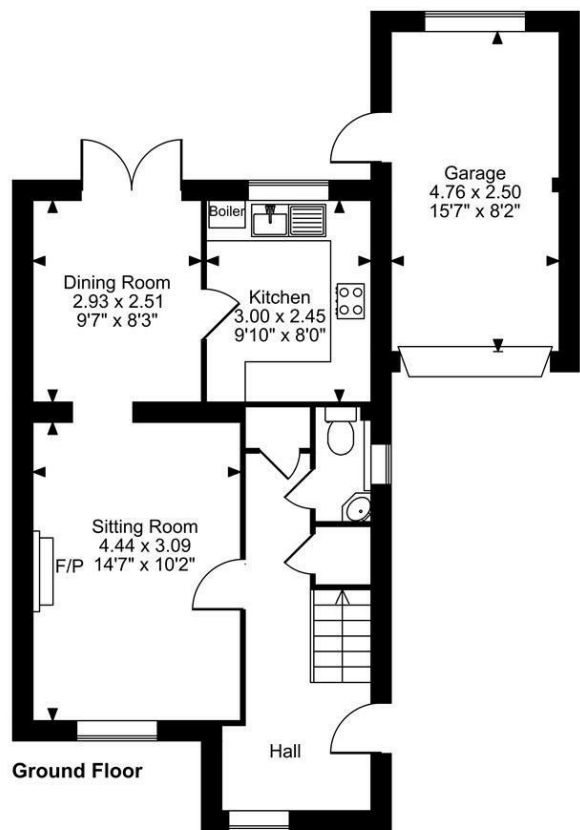
Shed

## VIEWING

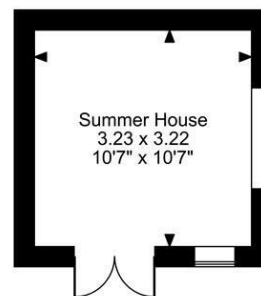
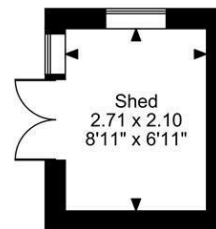
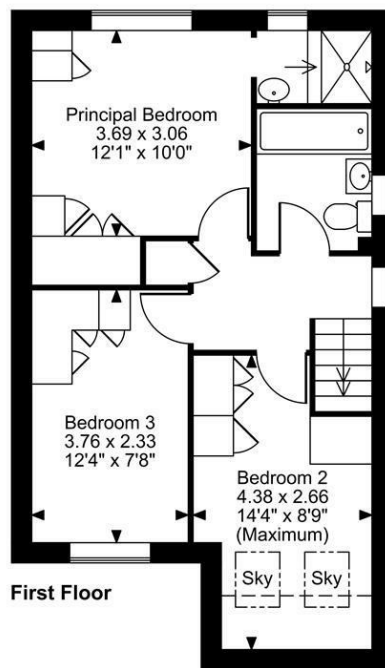
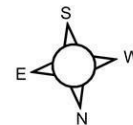
Strictly by arrangement with the Agent's Bearsted Office, 132 Ashford Road, Bearsted, Maidstone, Kent ME14 4LX. Tel: 01622 739574.







**Threshers Drive, Weaving, Maidstone**  
**Approximate Gross Internal Area**  
**Main House = 904 Sq Ft/84 Sq M**  
**Garage = 128 Sq Ft/12 Sq M**  
**Summer House & Shed = 173 Sq Ft/16 Sq M**  
**Total = 1205 Sq Ft/112 Sq M**



**FOR ILLUSTRATIVE PURPOSES ONLY - NOT TO SCALE**

The position & size of doors, windows, appliances and other features are approximate only.

□ □ □ Denotes restricted head height

© ehouse. Unauthorised reproduction prohibited. Drawing ref. dig/8672716/SAP

